

# ME 6,2 TBUS-2 1,5/5-ST-3,81 GY - DIN rail bus connectors

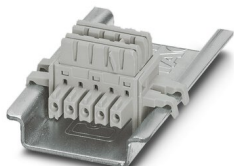


2695439

<https://www.phoenixcontact.com/us/products/2695439>

Please be informed that the data shown in this PDF document is generated from our online catalog. Please find the complete data in the user documentation. Our general terms of use for downloads are valid.

DIN rail connector (TBUS), 5-pos., for bridging the supply voltage, can be snapped onto NS 35/..  
. DIN rail in accordance with EN 60715



## Commercial data

Item number	2695439
Packing unit	1 pc
Minimum order quantity	10 pc
Sales key	AC08
Product key	ACHACA
Catalog page	Page 108 (C-5-2019)
GTIN	4046356447430
Weight per piece (including packing)	6.126 g
Weight per piece (excluding packing)	6 g
Customs tariff number	85366990
Country of origin	DE

# ME 6,2 TBUS-2 1,5/5-ST-3,81 GY - DIN rail bus connectors



2695439

<https://www.phoenixcontact.com/us/products/2695439>

## Technical data

### Product properties

Product type	DIN rail connector
--------------	--------------------

### Dimensions

Width	19.25 mm
Height	36.3 mm
Length	21.65 mm

# ME 6,2 TBUS-2 1,5/5-ST-3,81 GY - DIN rail bus connectors





2695439

<https://www.phoenixcontact.com/us/products/2695439>

## Approvals

To download certificates, visit the product detail page: <https://www.phoenixcontact.com/us/products/2695439>

 <b>cUL Recognized</b> Approval ID: FILE E 60425				
	Nominal voltage $U_N$	Nominal current $I_N$	Cross section AWG	Cross section $mm^2$
Use group B	150 V	8 A	-	-
Use group D	150 V	8 A	-	-

 <b>UL Recognized</b> Approval ID: FILE E 60425				
	Nominal voltage $U_N$	Nominal current $I_N$	Cross section AWG	Cross section $mm^2$
Use group B	150 V	8 A	-	-
Use group D	150 V	8 A	-	-

<b>cULus Recognized</b>				
-------------------------	--	--	--	--

# ME 6,2 TBUS-2 1,5/5-ST-3,81 GY - DIN rail bus connectors



2695439

<https://www.phoenixcontact.com/us/products/2695439>

## Classifications

### ECLASS

ECLASS-11.0	27460201
ECLASS-12.0	27460201
ECLASS-13.0	27460201

### ETIM

ETIM 9.0	EC002637
----------	----------

### UNSPSC

UNSPSC 21.0	39121400
-------------	----------

# ME 6,2 TBUS-2 1,5/5-ST-3,81 GY - DIN rail bus connectors



2695439

<https://www.phoenixcontact.com/us/products/2695439>

## Environmental product compliance

China RoHS	Environmentally friendly use period: unlimited = EFUP-e
	No hazardous substances above threshold values

# ME 6,2 TBUS-2 1,5/5-ST-3,81 GY - DIN rail bus connectors



2695439

<https://www.phoenixcontact.com/us/products/2695439>

## Accessories

### IMC 1,5/ 5-ST-3,81 AU - Printed-circuit board connector

1943276

<https://www.phoenixcontact.com/us/products/1943276>



PCB connector, nominal cross section: 1.5 mm<sup>2</sup>, color: green, nominal current: 8 A, rated voltage (III/2): 160 V, contact surface: Gold, contact connection type: Pin, number of potentials: 5, number of rows: 1, number of positions: 5, number of connections: 5, product range: IMC 1,5/..-ST, pitch: 3.81 mm, connection method: Screw connection with tension sleeve, screw head form: L Slotted, conductor/PCB connection direction: 0 °, plug-in system: COMBICON MC 1,5, locking: without, mounting: without, type of packaging: packed in cardboard

### IMC 1,5/ 5-ST-3,81 GY7035 AU - Printed-circuit board connector

1719707

<https://www.phoenixcontact.com/us/products/1719707>



PCB connector, nominal cross section: 1.5 mm<sup>2</sup>, color: light grey, nominal current: 8 A, rated voltage (III/2): 160 V, contact surface: Gold, contact connection type: Pin, number of potentials: 5, number of rows: 1, number of positions: 5, number of connections: 5, product range: IMC 1,5/..-ST, pitch: 3.81 mm, connection method: Screw connection with tension sleeve, screw head form: L Slotted, conductor/PCB connection direction: 0 °, plug-in system: COMBICON MC 1,5, locking: without, mounting: without, type of packaging: packed in cardboard

Phoenix Contact 2023 © - all rights reserved

<https://www.phoenixcontact.com>

Phoenix Contact USA

586 Fulling Mill Road

Middletown, PA 17057, United States

(+717) 944-1300

[info@phoenixcon.com](mailto:info@phoenixcon.com)